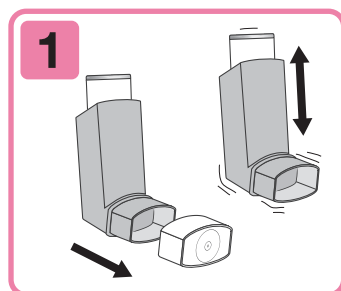


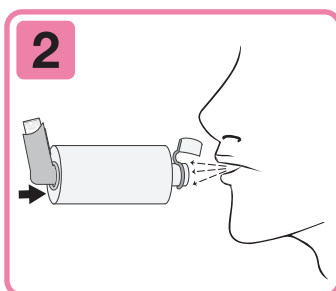
HOW TO USE YOUR INHALER WITH A SPACER

ENGLISH

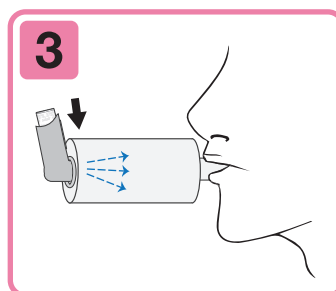
Inhalers are best used with a spacer as more medication will reach your lungs than an inhaler on its own. If you have a spacer, use the following instructions:



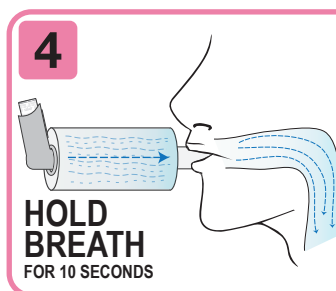
1. Remove the plastic dust cap from the mouthpiece of the inhaler and check the mouthpiece is clean. Check the dose counter on your inhaler if your device has one. Shake inhaler well and prime if necessary.



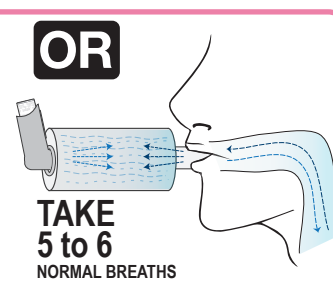
2. Insert the inhaler into the spacer at the opposite end to the mouthpiece. Breathe out deeply through your mouth.



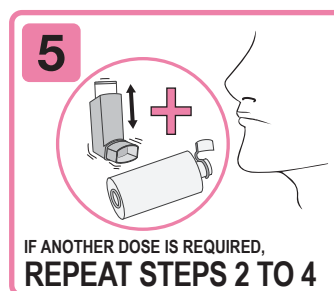
3. Place the mouthpiece of the spacer in your mouth taking care to not bite it and close your lips over the mouthpiece. Depress the canister **ONCE** to release one dose into the spacer.



4. Breathe in through your mouth deeply and steadily and hold your breath for 10 seconds. While holding your breath, remove the spacer from your mouth. Breathe out gently.



OR Take 5 to 6 normal breaths while the spacer is in your mouth. Remove the spacer from your mouth then breathe out gently.



5. If another dose is required, repeat steps 2 to 4. Do not rush steps 2, 3, and 4. **Remember to shake the inhaler well between doses.**



QUICK TIP Clean your spacer weekly. Please refer to the cleaning instructions that come with your spacer.

IMPORTANT

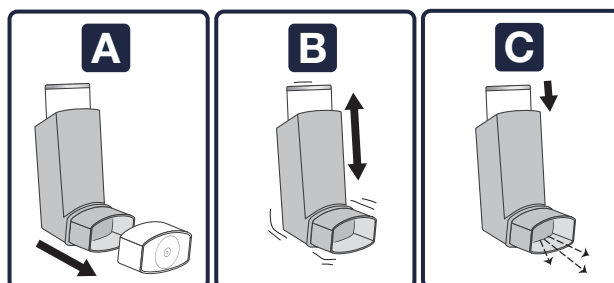
Inhalers are best used with spacers. Use a spacer with your preventer or combination pressurised metered dose inhalers. A spacer is also highly recommended with your reliever inhaler in an acute asthma attack.

Provide feedback to your doctor if you have any concerns or issues when using your inhaler. If different directions have been provided by your doctor, please follow these instructions with care.

PRIME YOUR INHALER

Prime your inhaler prior to using your inhaler for the first time or if the inhaler has not been used for more than one week.

Hold the inhaler upright and remove the plastic dust cap from the mouthpiece of the inhaler. Shake the inhaler and depress the canister twice into the air to prime the inhaler.

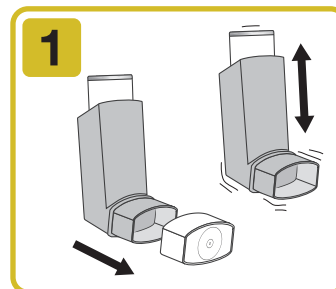


REX Medical Ltd
P O Box 18-119, Glen Innes,
Auckland 1743, New Zealand
Phone +64 9 574 6060 Fax +64 9 574 6070
www.rexmedical.co.nz
© Copyright REX Medical Ltd

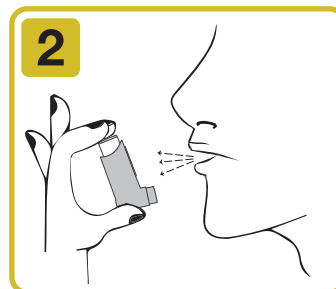
rex

HOW TO USE YOUR INHALER WITHOUT A SPACER

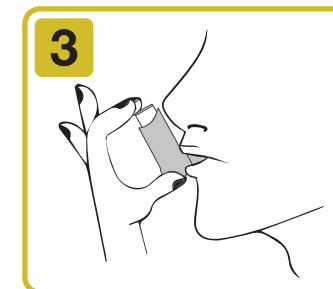
If you don't have a spacer, use the following instructions:



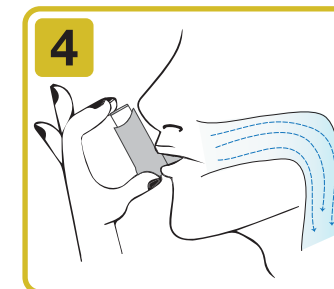
1. Remove the plastic dust cap from the mouthpiece of the inhaler and check the mouthpiece is clean. Check the dose counter on your inhaler if your device has one. Shake inhaler well and prime if necessary.



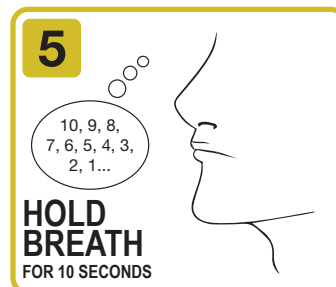
2. Hold the inhaler using either one or two fingers on the top of the canister and your thumb on the base. Breathe out deeply through your mouth.



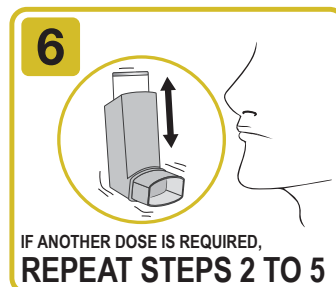
3. Place the mouthpiece of the inhaler in your mouth taking care to not bite it and close your lips over the mouthpiece.



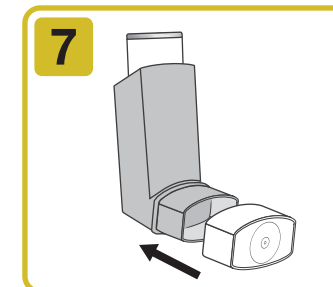
4. Start breathing in through your mouth. Then depress the canister to release one dose while continuing to breathe in deeply and steadily.



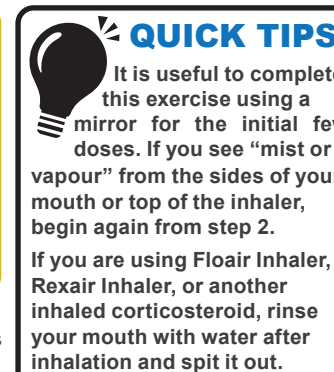
5. Remove the inhaler from your mouth and hold your breath for 10 seconds, or as long as comfortable. Breathe out slowly.



6. If another dose is required, repeat steps 2 to 5. Do not rush steps 2, 3, 4, and 5. **Remember to shake the inhaler well between doses.**

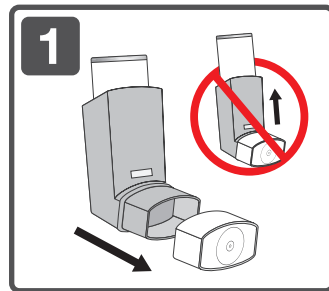


7. After use, replace the mouthpiece cover making sure the dust cap is secure.

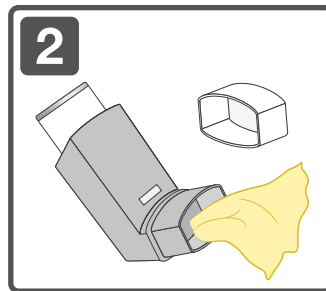


HOW TO CLEAN YOUR INHALER

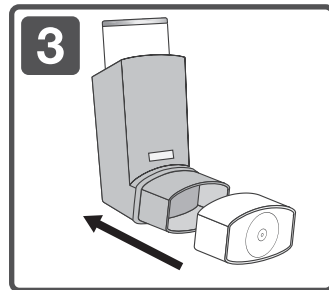
The plastic actuator must be cleaned at least once a week. Use the following technique to clean your inhaler:



1. Remove the plastic dust cap from the mouthpiece of the inhaler. **THE METAL CANISTER SHOULD NOT BE REMOVED FROM THE PLASTIC ACTUATOR.**



2. The plastic mouthpiece and the dust cap are to be wiped inside and outside with a clean dry cloth.



3. Replace the plastic dust cap on to the mouthpiece of the inhaler.



NEVER WASH OR SOAK ANY PART OF THE INHALER IN WATER.

© Copyright REX Medical Ltd

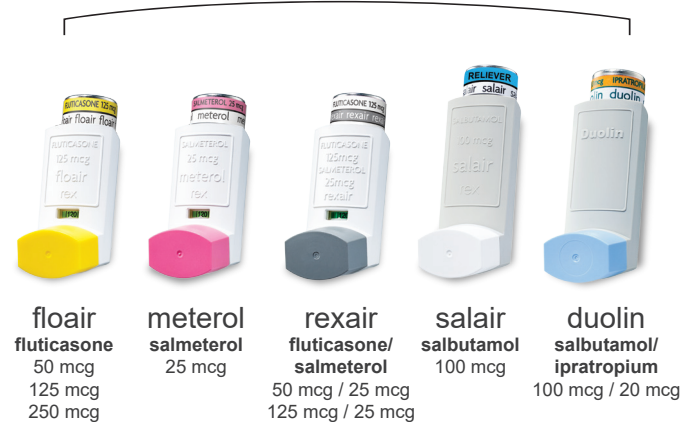
These medicines have risks and benefits. Read below for more details.

SALAIR INHALER contains 100 mcg Salbutamol, PRESCRIPTION MEDICINE. **Indication:** Salair Inhaler is indicated for the prevention and treatment of bronchospasm and acts on the β_2 (beta-2) adrenoceptors of bronchial muscle at therapeutic doses, with little or no action on the β_1 (beta-1) adrenoceptors of the heart. With its fast onset of action, it is particularly suitable for the management and prevention of attack in mild asthma and for the treatment of acute exacerbations in moderate and severe asthma. **Dosage and administration:** Salair Inhaler is for oral inhalation only. Salair Inhaler should not be used on demand more than four times per day. Please review the datasheet for the recommended doses of Salair Inhaler for children and adults. **Contraindications:** Management of threatened abortion and premature labour is contraindicated with Salbutamol formulations administered non intravenously. **Precautions/Warnings:** Patients with unstable or severe asthma should not rely on bronchodilators as the main or only form of treatment. **Please review the datasheet available at www.medsafe.govt.nz for full prescribing information.**

METEROL INHALER with Dose Counter contains 25 mcg Salmeterol (as xinafoate), PRESCRIPTION MEDICINE. **Indication:** Meterol Inhaler is indicated in the regular therapy of asthma and prevention of bronchospasm in individuals aged 4 years and older with reversible obstructive airway disease, including those with symptoms of nocturnal asthma, when used in combination with a long-term asthma prevention medicine such as an inhaled corticosteroid. Meterol Inhaler is also indicated for exercise-induced bronchospasm and in the regular maintenance treatment of bronchospasm associated with chronic obstructive pulmonary disease. **Dosage and administration:** Meterol Inhaler is for oral inhalation only. Please review the datasheet for the recommended doses of Meterol Inhaler for children and adults. **Contraindications:** Meterol Inhaler is contraindicated in individuals with hypersensitivity to any of its components (please review excipient list). **Precautions/Warnings:** Meterol Inhaler should not be used (and is not sufficient) as the first treatment for asthma. Meterol Inhaler is not a substitute for inhaled or oral corticosteroids. Meterol Inhaler should not be used to treat acute asthma symptoms for which a fast and short-acting inhaled bronchodilator (e.g. Salbutamol) is required. **Please review the datasheet available at www.medsafe.govt.nz for full prescribing information.**

FLOAIR INHALER with Dose Counter contains 50 mcg Fluticasone propionate, 125 mcg Fluticasone propionate, or 250 mcg Fluticasone propionate, PRESCRIPTION MEDICINE. **Indication:** Floair Inhaler is indicated for the long-term prevention of bronchospasm in adults or children with mild, moderate or severe asthma. Floair Inhaler is also indicated for adults or children with severe asthma dependent on oral corticosteroids for symptom control. Introduction of Floair Inhaler may allow the requirement for oral corticosteroids to be reduced or eliminated over time. **Dosage and Administration:** Floair Inhaler is for oral inhalation only. Please review the datasheet for the recommended doses of Floair Inhaler for children (cont.)

Our family of products for asthma and COPD management



rexmedical.co.nz



SCAN THE QR CODE FOR FURTHER INFORMATION

ENGLISH
INHALER
INSTRUCTIONS
FOR
ADULTS



INHALER INSTRUCTIONS FOR ADULTS

- How to use your inhaler with a spacer
- How to use your inhaler without a spacer
- How to clean your inhaler

rex

(FLOAIR INHALER cont.) and adults. **Contraindications:** Floair Inhaler is contraindicated in individuals with hypersensitivity to any of its components. **Precautions/Warnings:** Floair Inhaler should not be used to treat acute asthma symptoms for which a fast and short-acting inhaled bronchodilator is required. Patients should be advised to have their short-acting inhaled bronchodilator (e.g. Salbutamol) for the relief of acute asthma symptoms available at all times. Treatment with Floair Inhaler should not be discontinued suddenly. **Please review the datasheet available at www.medsafe.govt.nz for full prescribing information.**

REXAIR INHALER with Dose Counter contain 50 mcg Fluticasone propionate and 25 mcg Salmeterol; or 125 mcg Fluticasone propionate and 25 mcg Salmeterol, PRESCRIPTION MEDICINE. **Indication:** Rexair Inhaler is indicated for reversible obstructive airways disease (ROAD), or the regular therapy of asthma in children and adults, where a combination (inhaled corticosteroid and bronchodilator) is appropriate. Rexair Inhaler is indicated in patients for the symptomatic treatment of COPD which is moderate to severe (i.e. <60% of normal FEV₁ predicted prior to bronchodilator usage) and despite bronchodilator therapy, have significant symptoms.

Dosage and Administration: Rexair Inhaler is to be administered by oral inhalation only. Please review the datasheet for the recommended doses of Rexair Inhaler for children and adults. **Contraindications:** Hypersensitivity to Salmeterol xinafoate, Fluticasone propionate or the excipients (please review excipient list). **Precautions/Warnings:** Where patients have acutely deteriorating asthma or are unstable, Rexair Inhaler should not be started during an exacerbation. Rexair Inhaler is indicated for routine long-term management of asthma, not for acute asthma exacerbations or for patients with acutely deteriorating or unstable asthma. Patients with acute symptoms should be advised to have a fast and short-acting inhaled bronchodilator (e.g. Salbutamol) immediately available to resolve acute symptoms. **Please review the datasheet available at www.medsafe.govt.nz for full prescribing information.**

DUOLIN INHALER contains 100 mcg Salbutamol (as sulphate) and 20mcg Ipratropium bromide, PRESCRIPTION MEDICINE. **Indication:** Duolin Inhaler is indicated for the treatment of reversible bronchospasm associated with obstructive airway diseases in patients who require more than a single bronchodilator. **Dosage and administration:** Duolin Inhaler is for oral inhalation only. Please review the datasheet for the recommended doses of Duolin Inhaler for children and adults. **Contraindications:** Duolin Inhaler is contraindicated in patients with a history of hypersensitivity to atropine or its derivatives, or to any other component of the product and in patients with hypertrophic obstructive cardiomyopathy and tachyarrhythmia. **Precautions/Warnings:** In the case of acute or rapid breathlessness, if additional inhalations do not produce an adequate improvement patients should consult their doctor immediately. **Please review the datasheet available at www.medsafe.govt.nz for full prescribing information.**

TAPS NA 10489. VER-4 2019.07.CC