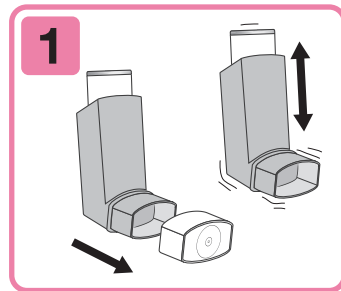


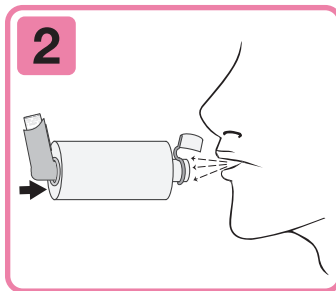
흡입기를 흡입보조기와 함께 사용하는 방법

흡입기를 독자적으로 사용하는 것보다 흡입보조기(spacer)와 함께 사용하는 것이 좋습니다. 약품이 폐에 더 많이 전달되기 때문입니다. 흡입보조기를 사용하는 경우 다음 지시 사항을 따르십시오.

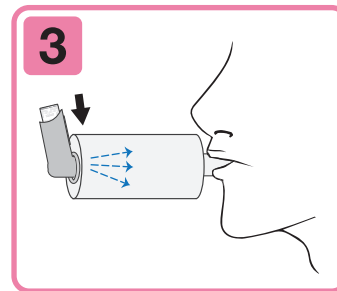
KOREAN



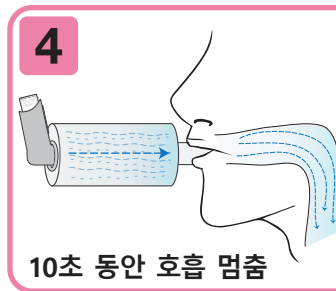
1. 흡입기의 흡입구에서 플라스틱 뚜껑을 빼고 흡입구가 깨끗한 지 확인하십시오. 흡입기에 용량 계측기(dose counter)가 있으면 이를 확인하십시오. 흡입기를 잘 흔들고 필요한 경우 예비작동(prime)을 하십시오.



2. 흡입기를 흡입보조기의 흡입구 반대쪽 끝에 끼십시오. 입으로 숨을 최대한 깊게 공중으로 내쉬십시오.

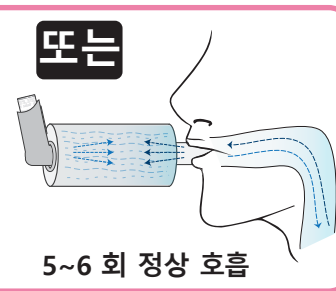


3. 흡입보조기의 흡입구를 입안에 넣으십시오. 물지 말고 호흡이 새지 않게 입술을 다무십시오. 금속통(canister)을 **한번** 눌러 1회 분량의 약품이 흡입보조기에 나오게 하십시오.



10초 동안 호흡 멈춤

4. 입으로 숨을 천천히 깊게 들이마신 후 10초 동안 숨을 멈추십시오. 숨을 멈춘 상태로 입에서 흡입보조기를 떼십시오. 천천히 숨을 내쉬십시오.



또는 5~6 회 정상 호흡

또는 흡입보조기가 입안에 있을 때 5~6 회 정상 호흡을 하십시오. 입에서 흡입보조기를 떼고 천천히 숨을 내쉬십시오.



한번 더 흡입이 필요할 경우 2~4 단계를 반복하십시오.

5. 한번 더 흡입이 필요할 경우 2~4 단계를 반복하십시오. 2, 3, 4 단계에서 서두르지 마십시오. **흡입과 흡입 사이에는 흡입기를 잘 흔들어 주십시오.**



주의사항

흡입보조기는 매주 청소하십시오. 흡입보조기와 함께 제공되는 청소 지침을 참조하십시오.

중요

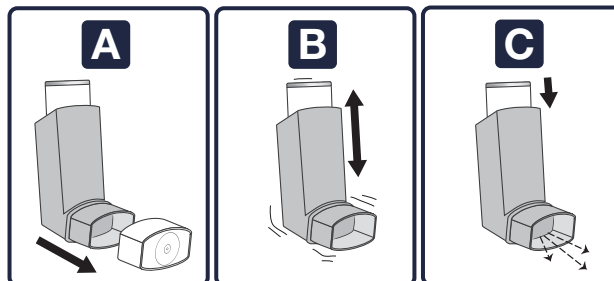
흡입기는 흡입보조기와 함께 사용하는 것이 가장 좋습니다. 예방용 흡입기 또는 복합제가 함유된 정량식 흡입기(metered dose inhaler)의 경우는 흡입보조기를 사용하십시오. 급성 천식 발생 시 완화용 흡입기를 사용하는 경우에도 흡입보조기를 사용하는 것이 좋습니다.

흡입기를 사용할 때 염려나 문제가 있으면 의사에게 문의하십시오. 의사의 별도 지시가 있는 경우, 의사의 지시를 따르십시오.

흡입기 예비작동

흡입기를 처음 사용하거나 1주일 이상 사용하지 않은 경우, **사용 전에 흡입기 예비작동(prime)을 하십시오.**

흡입기를 똑바로 세워 잡고 흡입기의 흡입구에서 플라스틱 뚜껑을 빼십시오. 흡입기를 흔들고 공중을 향해 금속통을 두 번 눌러 흡입기 예비작동을 하십시오.

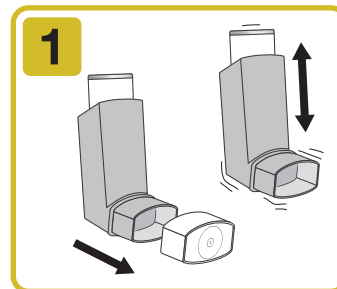


REX Medical Ltd
P O Box 18-119, Glen Innes,
Auckland 1743, New Zealand
Phone +64 9 574 6060 Fax +64 9 574 6070
www.rexmedical.co.nz
© Copyright REX Medical Ltd

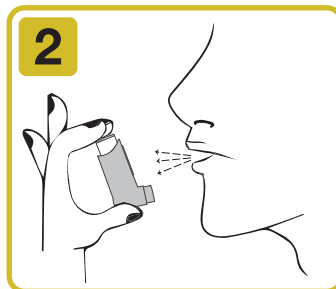
rex

흡입기를 흡입보조기 없이 사용하는 방법

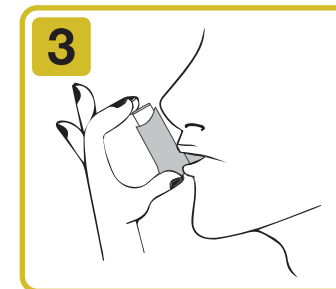
흡입보조기가 없는 경우 다음 지침을 따르십시오.



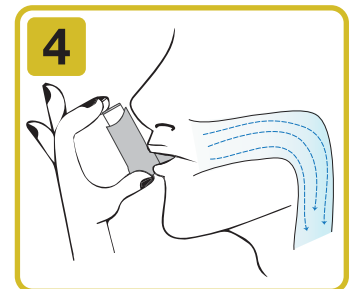
1. 흡입기의 흡입구에서 플라스틱 뚜껑을 빼고 흡입구가 깨끗한 지 확인하십시오. 흡입기에 용량 계측기(dose counter)가 있으면 이를 확인하십시오. 흡입기를 잘 흔들고 필요한 경우 예비작동(prime)을 하십시오.



2. 금속통(canister) 윗면에 손가락 하나나 둘, 밑면에 엄지를 대고 흡입기를 잡으십시오. 입으로 숨을 최대한 깊게 공중으로 내쉬십시오.



3. 흡입기의 흡입구를 입안에 넣으십시오. 물지 말고 호흡이 새지 않게 입술을 다무십시오.



4. 입으로 숨을 들이쉬기 시작하십시오. 다음, 금속통을 눌러 1회 분량의 약품이 나오게 하고 가능한 한 천천히 깊게 흡입하십시오.



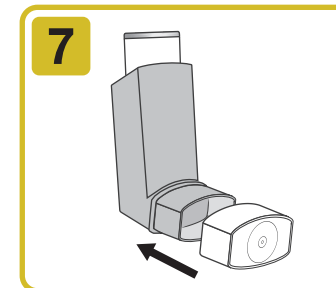
10초 동안 호흡 멈춤

5. 입에서 흡입기를 떼고 10초 또는 그 이상 오래 숨을 멈추십시오. 천천히 숨을 내쉬십시오.

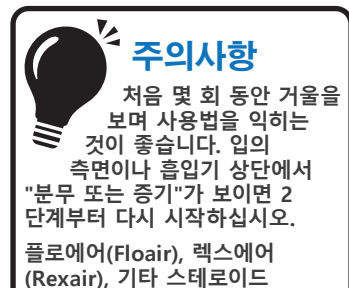


한번 더 흡입이 필요할 경우 2~5 단계를 반복하십시오

6. 한번 더 흡입이 필요할 경우 2~5 단계를 반복하십시오. 2, 3, 4, 5 단계에서 서두르지 마십시오. **흡입과 흡입 사이에는 흡입기를 잘 흔들어 주십시오.**



7. 사용 후에는 흡입구 뚜껑을 다시 끼고 뚜껑이 고정되었는지 확인하십시오.



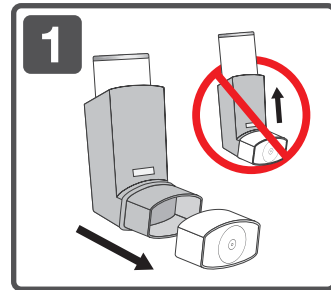
주의사항

처음 몇 회 동안 거울을 보며 사용법을 익히는 것이 좋습니다. 입의 측면이나 흡입기 상단에서 "분무 또는 증기"가 보이면 2 단계부터 다시 시작하십시오.

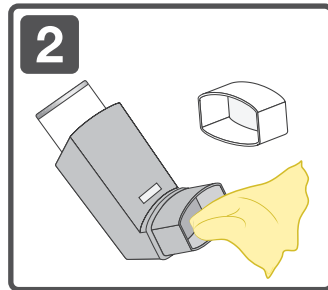
플로에어(Floair), 렉스에어(Rexair), 기타 스테로이드(corticosteroid) 흡입기의 경우에는 흡입 후 물로 입을 헹구고 뱀을 내십시오.

흡입기 청소 방법

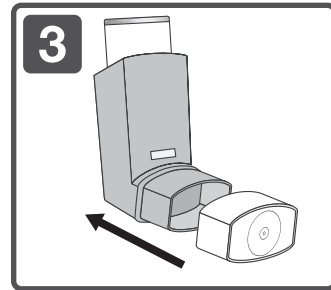
플라스틱 약품분사기구(actuator)는 최소한 일주일에 한 번 청소해야 합니다.
흡입기를 청소할 때는 다음 방법을 사용하십시오.



1. 흡입기의 흡입구에서 플라스틱 먼지막이 뚜껑을 빼십시오.
플라스틱 약품분사기구에서 금속통(canister)은 빼지 마십시오.



2. 플라스틱 흡입구와 뚜껑을 깨끗한 마른 천으로 안팎을 닦으십시오.



3. 플라스틱 뚜껑을 흡입기의 흡입구에 다시 끼십시오.



흡입기의 어느 부분을 물에 씻거나 담그지 마십시오.

© Copyright REX Medical Ltd

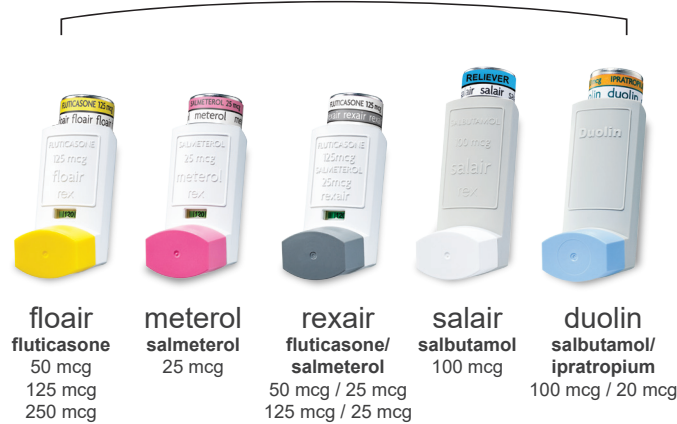
These medicines have risks and benefits. Read below for more details.

SALAIR INHALER contains 100 mcg Salbutamol, PRESCRIPTION MEDICINE. **Indication:** Salair Inhaler is indicated for the prevention and treatment of bronchospasm and acts on the β_2 (beta-2) adrenoceptors of bronchial muscle at therapeutic doses, with little or no action on the β_1 (beta-1) adrenoceptors of the heart. With its fast onset of action, it is particularly suitable for the management and prevention of attack in mild asthma and for the treatment of acute exacerbations in moderate and severe asthma. **Dosage and administration:** Salair Inhaler is for oral inhalation only. Salair Inhaler should not be used on demand more than four times per day. Please review the datasheet for the recommended doses of Salair Inhaler for children and adults. **Contraindications:** Management of threatened abortion and premature labour is contraindicated with Salbutamol formulations administered non intravenously. **Precautions/Warnings:** Patients with unstable or severe asthma should not rely on bronchodilators as the main or only form of treatment. **Please review the datasheet available at www.medsafe.govt.nz for full prescribing information.**

METEROL INHALER with Dose Counter contains 25 mcg Salmeterol (as xinafoate), PRESCRIPTION MEDICINE. **Indication:** Meterol Inhaler is indicated in the regular therapy of asthma and prevention of bronchospasm in individuals aged 4 years and older with reversible obstructive airway disease, including those with symptoms of nocturnal asthma, when used in combination with a long-term asthma prevention medicine such as an inhaled corticosteroid. Meterol Inhaler is also indicated for exercise-induced bronchospasm and in the regular maintenance treatment of bronchospasm associated with chronic obstructive pulmonary disease. **Dosage and administration:** Meterol Inhaler is for oral inhalation only. Please review the datasheet for the recommended doses of Meterol Inhaler for children and adults. **Contraindications:** Meterol Inhaler is contraindicated in individuals with hypersensitivity to any of its components (please review excipient list). **Precautions/Warnings:** Meterol Inhaler should not be used (and is not sufficient) as the first treatment for asthma. Meterol Inhaler is not a substitute for inhaled or oral corticosteroids. Meterol Inhaler should not be used to treat acute asthma symptoms for which a fast and short-acting inhaled bronchodilator (e.g. Salbutamol) is required. **Please review the datasheet available at www.medsafe.govt.nz for full prescribing information.**

FLOAIR INHALER with Dose Counter contains 50 mcg Fluticasone propionate, 125 mcg Fluticasone propionate, or 250 mcg Fluticasone propionate, PRESCRIPTION MEDICINE. **Indication:** Floair Inhaler is indicated for the long-term prevention of bronchospasm in adults or children with mild, moderate or severe asthma. Floair Inhaler is also indicated for adults or children with severe asthma dependent on oral corticosteroids for symptom control. Introduction of Floair Inhaler may allow the requirement for oral corticosteroids to be reduced or eliminated over time. **Dosage and Administration:** Floair Inhaler is for oral inhalation only. Please review the datasheet for the recommended doses of Floair Inhaler for children (cont.)

천식 및 COPD(만성폐쇄성폐질환) 관리용 당사 흡입기 제품군



rexmedical.co.nz



관련 추가 정보가 필요하면
QR 코드를 스캔하십시오.

KOREAN

한국어판
성인 흡입기
사용 설명서



흡입기 사용 설명서 성인 사용 지침서

- 흡입기를 흡입보조기와 함께 사용하는 방법
- 흡입기를 흡입보조기 없이 사용하는 방법
- 흡입기 청소 방법

rex

(FLOAIR INHALER cont.) and adults. **Contraindications:** Floair Inhaler is contraindicated in individuals with hypersensitivity to any of its components. **Precautions/Warnings:** Floair Inhaler should not be used to treat acute asthma symptoms for which a fast and short-acting inhaled bronchodilator is required. Patients should be advised to have their short-acting inhaled bronchodilator (e.g. Salbutamol) for the relief of acute asthma symptoms available at all times. Treatment with Floair Inhaler should not be discontinued suddenly. **Please review the datasheet available at www.medsafe.govt.nz for full prescribing information.**

REXAIR INHALER with Dose Counter contain 50 mcg Fluticasone propionate and 25 mcg Salmeterol; or 125 mcg Fluticasone propionate and 25 mcg Salmeterol, PRESCRIPTION MEDICINE. **Indication:** Rexair Inhaler is indicated for reversible obstructive airways disease (ROAD), or the regular therapy of asthma in children and adults, where a combination (inhaled corticosteroid and bronchodilator) is appropriate. Rexair Inhaler is indicated in patients for the symptomatic treatment of COPD which is moderate to severe (i.e. <60% of normal FEV₁ predicted prior to bronchodilator usage) and despite bronchodilator therapy, have significant symptoms. **Dosage and Administration:** Rexair Inhaler is to be administered by oral inhalation only. Please review the datasheet for the recommended doses of Rexair Inhaler for children and adults. **Contraindications:** Hypersensitivity to Salmeterol xinafoate, Fluticasone propionate or the excipients (please review excipient list). **Precautions/Warnings:** Where patients have acutely deteriorating asthma or are unstable, Rexair Inhaler should not be started during an exacerbation. Rexair Inhaler is indicated for routine long-term management of asthma, not for acute asthma exacerbations or for patients with acutely deteriorating or unstable asthma. Patients with acute symptoms should be advised to have a fast and short-acting inhaled bronchodilator (e.g. Salbutamol) immediately available to resolve acute symptoms. **Please review the datasheet available at www.medsafe.govt.nz for full prescribing information.**

DUOLIN INHALER contains 100 mcg Salbutamol (as sulphate) and 20mcg Ipratropium bromide, PRESCRIPTION MEDICINE. **Indication:** Duolin Inhaler is indicated for the treatment of reversible bronchospasm associated with obstructive airway diseases in patients who require more than a single bronchodilator. **Dosage and administration:** Duolin Inhaler is for oral inhalation only. Please review the datasheet for the recommended doses of Duolin Inhaler for children and adults. **Contraindications:** Duolin Inhaler is contraindicated in patients with a history of hypersensitivity to atropine or its derivatives, or to any other component of the product and in patients with hypertrophic obstructive cardiomyopathy and tachyarrhythmia. **Precautions/Warnings:** In the case of acute or rapid breathlessness, if additional inhalations do not produce an adequate improvement patients should consult their doctor immediately. **Please review the datasheet available at www.medsafe.govt.nz for full prescribing information.**

TAPS NA 10489. VER-3 2019.07.CC